



The Community Underwriting 2018 Small Grants Program

Making a real difference to the way insurance is
provided in the Not for Profit sector

www.communityunderwriting.com.au



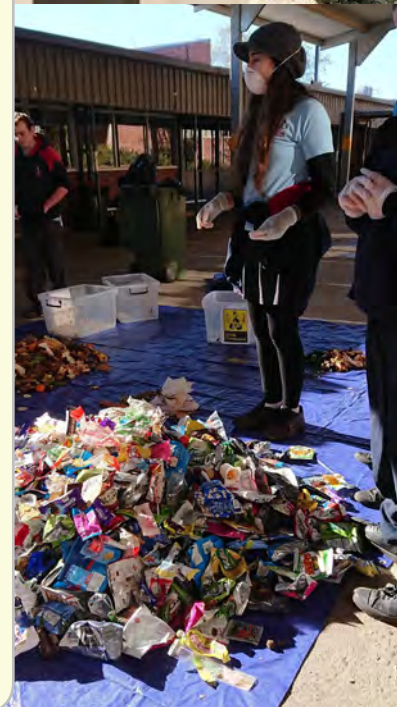
We are an underwriting agency dedicated to providing competitive and consistent insurance solutions to the Not for Profit sector.

Under our unique business model, Community Underwriting returns 70% of our surplus each year to our NFP shareholders. We set aside an additional 5% to fund our annual small grants program along with support from our insurer partners.

Since 2014 we have returned almost \$3,000,000 to our Not for Profit clients.

From humble beginnings, our small grants program has grown each year and today assists some fabulous organisations with projects across the sector. Our objective is to continue to grow the program each year to make a real difference to as many clients as possible.

Here are the stories from each of the 33 terrific activities and projects that have benefited from the 2018 grants program.





St Kilda Mums has been supporting disadvantaged families throughout Victoria since 2009, providing essential nursery equipment, delivering critical social, emotional and practical support to vulnerable families.

Our grant has assisted in providing 23 disadvantaged families with a pram - a form of mobility and transport for families who would otherwise struggle to access community facilities, take children to school or even make it to the supermarket.





Campbelltown Hospital has 8 paediatric units with over 35,000 children having face to face consultation each year.

Children often feel bad when they are in hospital at the time of a special event yet they are unable to get/create a gift which they would normally do at preschool or school.

The Kids of Macarthur Health Foundation *Occasion Craft for Sick Children* project provides individual craft kits for children in hospital so they can make their loved ones a card or gift for a special occasion; mothers day, fathers day, Christmas or Easter.



Toolo Ltd, the Blue Mountains tool library were looking to operate a monthly repair cafe following a movement that kicked off in Europe in 2004.

The repair cafe aims to reduce landfill by 100 tonnes each year by promoting a culture where members of the community can bring in broken household items, furniture, toys, clothing, electronics, computers and bicycles to be repaired by volunteers.



Due to their lack of fat and fur greyhounds do not have the same insulation against heat as other breeds of dog.



Spending time in runs provides the dogs with valuable and necessary exercise, reduces isolation and helps to foster and increase their confidence and wellbeing. This ultimately creates better prospects for their adoption.

We assisted Greyhound Rescue to upgrade their greyhound runs, to provide a safe, clean and hygienic environment, and adequate shade covering for the greyhounds and volunteers.



Lionheart is a children's bereavement program supporting grieving children between the ages of 5 & 12.

Project Hartley involved the design of Hartley, a plush doll aimed at helping children create, remember and use memories in a positive way and reduce anxiety and depression.

Dolls and tangible, plush aids have been shown repeatedly in the health professions to drastically improve kids ability to deal with death and loss.



Greater Sydney Landcare Network engage in preserving, restoring and fostering Sydney landscapes for current and future generations.

Our grant was used to deliver first aid training to a group of up to 20 members which will equip volunteer members with the skills to safely manage, look after and care for their on-the-ground members, and keep doing the good 'boots on the ground' work.



U3A South Australia is the peak body currently representing 19 U3A organisations across SA to provide affordable learning and leisure opportunities for people over 50 who are no longer in full-time employment.

Our grant was used as seed funding to assist with publicity, promotion, equipment, and premises costs for a potential new U3A group in Port Lincoln.



Many cancer patients undergoing chemotherapy need continuous 24 hr/day medication.



We assisted Community Cancer Link with the purchase of 5 syringe drivers, an initiative designed to enable community nurses in the Illawarra Shoalhaven district to administer medication at a patients home without the need to be admitted to hospital. The syringe drivers have an expected life of around 10 years, so overall, around 600 patients will directly benefit from this initiative.



Hampers of Hope is a project run by Griffith Meals on Wheels that rescues edible and nutritious food headed for landfill and redistributed to people in need in their community.

The grant was used to purchase instacrates to be used for the collection and delivery of hampers in a clean, hygienic and environmentally friendly way. These hampers go directly to disadvantaged members of the community including homeless, women & families in crisis, youth at risk, aged individuals, indigenous communities, asylum seekers and new arrivals.

The project also provides assistance to school breakfast programs.



Little Heros Swim Academy provides an inclusive environment where mainstream students and students with a disability learn together and from each other.



The program teaches more than just swimming strokes, it provides life skills and an understanding of the water from bath to pool to beach.

We assisted in the purchase of 5 Android tablets with waterproof cases to assist in communication with non-verbal and less-verbal students using images, as well as uploading storybooks of students lessons and photos of themselves and their teachers.



Bangalow Koalas Community Wildlife Corridor will enhance, protect and conserve habitat for threatened species and ecological communities including vulnerable koalas.

The project connects koala habitat and rainforest remnants in a wildlife corridor from Byron Bay to Binna Burra.

It links properties across both shires allowing koalas the opportunity to avoid residential areas and the threats that exist there.

The planting days connect the community, educate adults and children alike and create a momentum of real change in nurturing and growing a tree that in turn can support and protect one of Australia's most iconic animals.



Blue Mountains Aboriginal Culture and Resource Centre was looking to expand its capacity to practice, promote and teach Aboriginal cultural activity.

Our grant assisted in the finalisation of a cultural activity and education centre including an artifact cave, the development of a painting wall and the installation of a carving rock.



We assisted Mindful Aus to provide a wellbeing week for a primary school in Gippsland, a high risk mental health and suicide area.

The program provides 150 children from 6 - 12 years of age with a greater understanding of emotional control measures to build greater resilience and wellbeing, providing them with tools and strategies to look after themselves and other children in their surrounds.



Armidale Meals on Wheels have ageing customers and visitors that frequently visit their operations.

We assisted in the purchase and installation of handrails in their bathroom facilities to assist older people and those with mobility issues or disabilities.



The CareApp program is an initiative designed to increase the connectivity between volunteers, clients, their families and carers.

We assisted the purchase of mini tablets and the application as well as training for staff and volunteers to assist with the project implementation.



Martindale
Creek Catchment
Landcare

Dung beetles are a valuable contributor to the land by breaking down organic material, transporting nutrients from the surface to the subsoil, improving water infiltration and reducing runoff.

Martindale Creek Catchment Landcare provides educational experiences and resources through workshops, field days and training on weed management and sustainable agricultural practices.

We provided funds for their Dung Beetle training and monitoring program with the development of educational material for the community.



Sawtell Meals on Wheels is a small branch servicing their local area and expanding into Coffs Harbour. They operate a small cafe once a week to address social isolation in the frail and elderly population.

The grant was used to purchase a commercial freezer as the MOW service had been struggling in providing a professional service utilising domestic equipment.



Each year the Equatoria Community and Welfare Association organises a Christmas event with the aim to bring the South Sudanese community together to share their joy and culture with the wider community.

The events are also to target disadvantaged families and youth at risk of homelessness, to prevent young people from incarceration due to social issues.





War on Waste is a project implemented by Tumut High School P&C to educate and manage recycling in the school with a vision for students to become more present and mindful of their own waste production and management.

We assisted with funding for the purchase of bins and signage. Under the guidance of Teacher and “War on Waste” co-coordinator Mrs Saunders, students and staff worked in partnership with the Snowy Valleys Council to undergo a waste audit at the school.



Kevin Heinze Grow provides programs to over 200 people a week in Melbourne's East, most of whom have significant cognitive or physical disabilities or both.

The grant was used to produce and install signage throughout the large site to assist participants with autism spectrum disorder reduce anxiety and aid those with physical and cognitive disabilities to more easily navigate their way around the facilities.



SCAD (Spontaneous Coronary Artery Dissection) is an emergency heart condition that occurs when a tear forms in one of the blood vessels in the heart. SCAD is the number 1 cause of heart attacks in women under 50 and kills 3 x more women than breast cancer.

We assisted SCAD Research to create a video and launch an online campaign aimed at raising awareness about risk factors and symptoms.



Central Coast Council of P&C's utilised its grant for a cyber awareness forum, bringing together the Department of Education, Police E-Safety Commission and guest speakers to educate parents, community members and stakeholders of the risks and impacts on children.



Dobroyd Public School P&C were raising funds to build an outdoor learning space to facilitate open discussion and collaborative learning and teaching.

The food supplier for Meals on Wheels Albury only offers hot meals but a number of clients had been requesting frozen meals so that they would not need to be home when a meal was delivered.

We were able to assist MOW Albury to purchase a commercial freezer so they could offer their clients a choice of hot or frozen meals. This supports their objective to ensure more people in the community receive nutritious meals, allowing more people to remain independent in their own homes longer.





The Indian Squad Women's Association assist new migrant women in the Canterbury Bankstown area in Sydney.

Our grant assisted in providing driving lessons to assist women obtain their driving license. The project aims were to break a cycle of isolation and reliance on others, giving them independence and opening up opportunities to join the workforce and improving mental health and wellbeing.



**DUNEDOO COOLAH
LANDCARE**

Dunedoo Area Community Group were embarking on a mission to bring the community together providing seating in the local park for people to stop and enjoy the beautiful town.

Made of recycled materials, the seating provides increased accessibility for seniors, families and town visitors as well as additional resources for people to relax at events such as the local markets.



**THIS MEMORIAL
IS DEDICATED
TO THE
AUSTRALIAN NAVAL CONTINGENT
TO THE
3rd CHINA WAR
"BOXER REBELLION"
1900**

LEST WE FORGET

QLD Naval Brigade utilised their grant to replace the illegible plaque at the cenotaph outside the Southport Military Museum to commemorate the naval brigade during the China rebellion of 1900.



CULTURE

CULTUREATWORK

Culture at Work created the 'community healthy herb sculpture garden' project, aimed at local inner city residents who do not have access to a garden.

The program brings together artists who are also gardeners to create sculptures that plants can be grown on. Children, parents and grandparents are able to access fresh herbs, participate in outdoor community activity and pass on their skills to the next generation.



Ben Lomond Landcare manage a flock of sheep that graze areas of public land within the village to maintain a tidy streetscape whilst maintaining environmental and biosecurity standards.



The grant was used to assist in the removal and replacement of 255 metres of fence to enable the flock to safely and appropriately utilise an unused green space.



Pgnea Chey School is located in Siem Reap City, Cambodia and provides a free formal primary education program (kindergarten to Year 9) in both Khmer and English for children living in extreme poverty. The school serves over 150 disadvantaged children / orphans with four classes, six days per week.



The grant will go towards teacher wages and learning resources, utilities and internet services and a food program.



The Kiwanis Club of Pacific Pines have been running its Food 4 Thought Breakfast Club recognising that a large number of children in the area were going to school without sufficient food for breakfast and with empty lunchboxes.



The program proved so successful that they have been averaging 200 students every week and were struggling to keep up with demand. Our grant assisted in the purchase of an additional sandwich press and chest freezer to store food donations received during the week.



Wentworth Military Collection showcases a permanent exhibition of Australian service of military forces over the past 125 years.

The grant was used to frame and preserve original silk banners from 1916, 1941 (Egypt) and 2009 (Iraq) and mount the original Crest of the HMAS Adelaide.